

NAS server - Network Guide

If you cannot find the NAS server in the “NetTool”, please follow the below steps.

Please go to the operating system you have, to find the correct guide for your operating system.

[Windows XP](#)

[Window Vista](#)

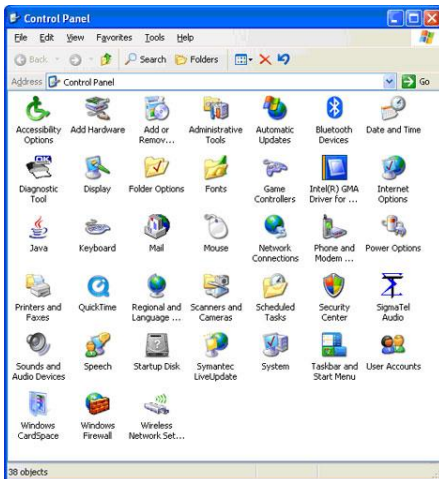
[Windows 7](#)

[MAC OS](#)

Windows XP

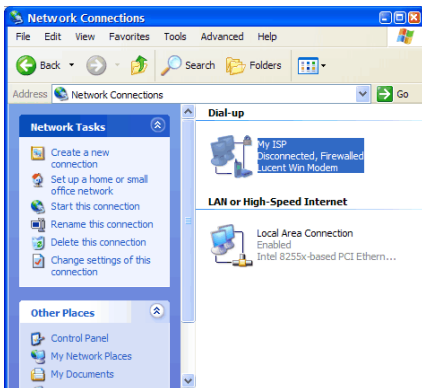
First of all we need to change the IP on your computer to a fixed IP, so it is able to communicate with the NAS server. This is done the following way.

Step 1. Go to the control panel.



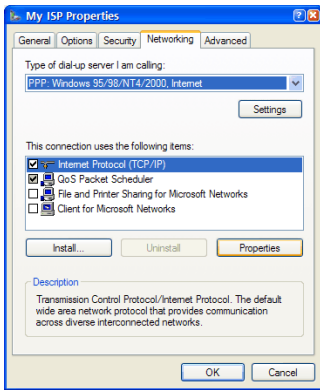
This is done by clicking on the Start button in the bottom left corner and then clicking on Control Panel.

Step 2. Double click on the Network connections.

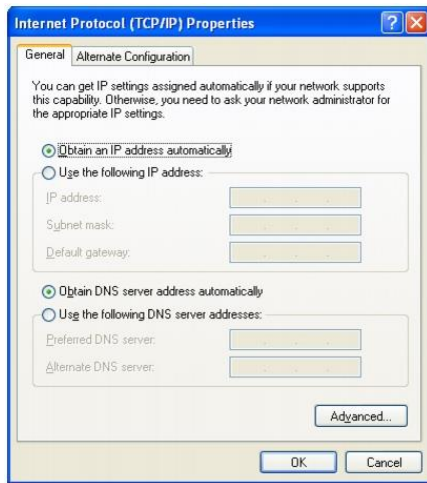


NAS server - Network Guide

Step 3. Double click Local Area connection.



Step 4. Double click Internet Protocol. (TCP/IP)



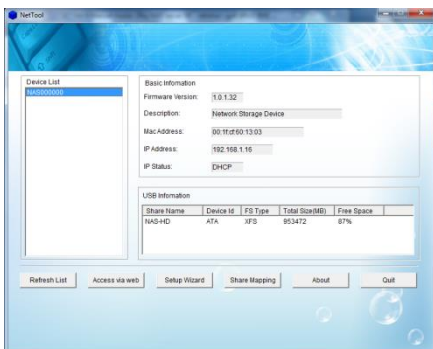
Step 5. Click on Use the following IP address.

IP address: Type: 192.168.16.3

Subnet mask: Type: 255.255.255.0 this may be typed automatically.

Press OK

Step 6. Start the "NetTool" and the NAS server will be visible.



Step 7. Now please return to the "Getting Started" guide Step 1.

NAS server - Network Guide

Windows Vista

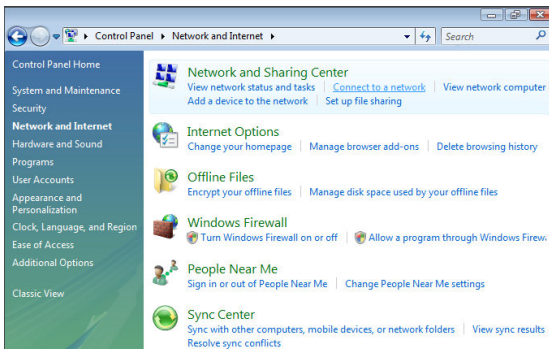
First of all we need to change the IP on your computer to a fixed IP so it is able to communicate with the NAS server. This is done the following way.

Step 1. Go to the control panel.

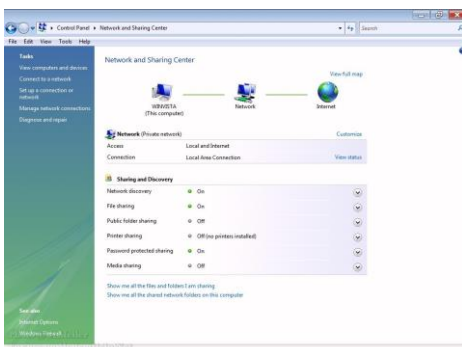


This is done by clicking on the Start button in the bottom left corner and then clicking on Control Panel.

Step 2. Click Network and Internet.

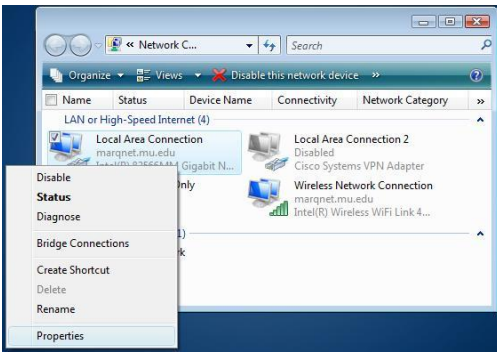


Step 3. Click Network and Sharing Center.

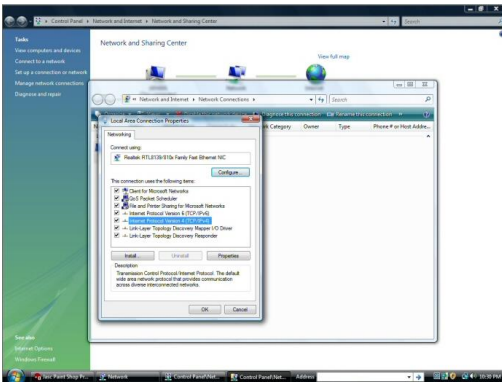


Step 4. Click Network connections or Wireless Connection.

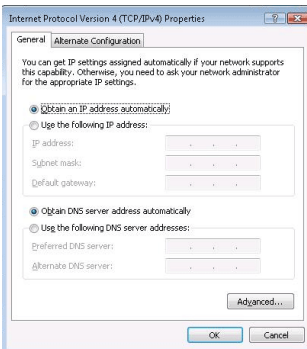
NAS server - Network Guide



Step 5. Right click Local Area Connection and select Properties.



Step 6. Double click Internet Protocol Version 4. (TCP/IPv4)



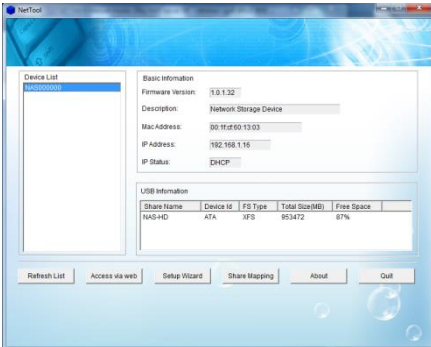
Step 7. Click on Use the following IP address.

IP address: Type 192.168.16.3

Subnet mask: Type 255.255.255.0 this may be typed automatically by pressing "TAB" button
Press OK.

NAS server - Network Guide

Step 8. Start the “NetTool” and the NAS server will be visible.

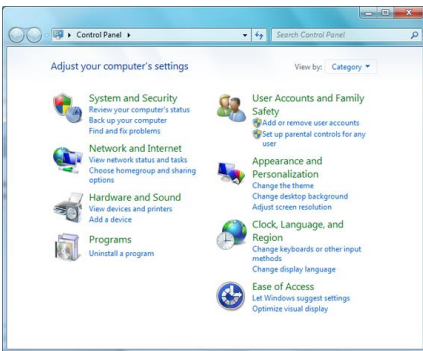


Step 9. Now please return to the “Getting Started” guide Step 1.

Windows 7

First of all we need to change the IP on your computer to a fixed IP so it is able to communicate with the NAS server. This is done the following way.

Step 1. Go to the control panel.



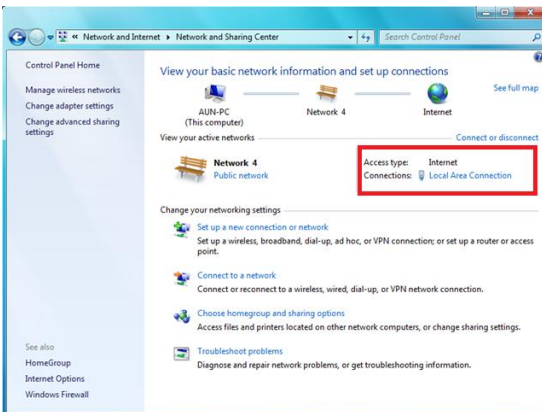
This is done by clicking on the Start button in the bottom left corner and then clicking on Control Panel.

Step 2. Network and Sharing Center (You may have to click “Network and Internet” first)

NAS server - Network Guide

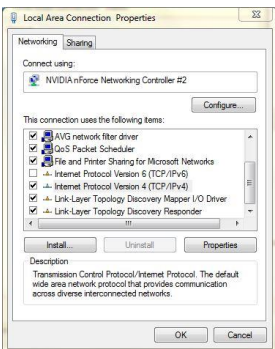


Step 3. Click Network and Sharing Center.



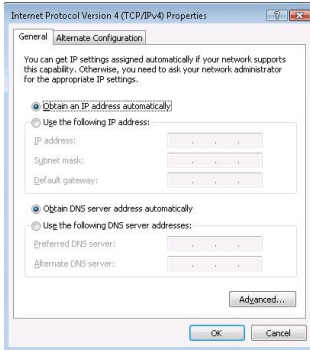
Step 4. Click "Local Area Connection" (LAN) or Wireless Network Connection

Step 5. Select Properties.



Step 6. Double click Internet Protocol Version 4. (TCP/IPv4)

NAS server - Network Guide



Step 7. Click on Use the following IP address.

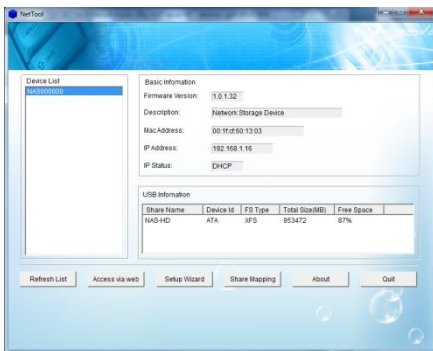
IP address: Type 192.168.16.3

Subnet mask: Type 255.255.255.0 this may be typed automatically, by pressing the “TAB” button

Press Ok.

Press Ok to the Local Area Connection (LAN) Properties also.

Step 8. Start the “NetTool” again or press “Refresh” and the NAS server will be visible.



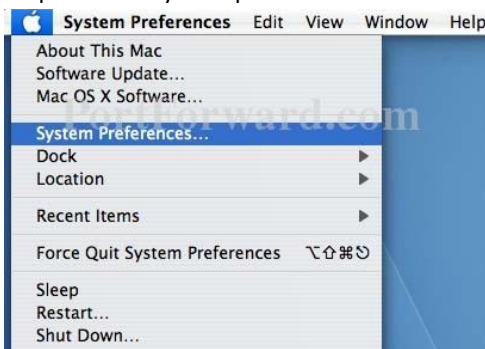
Step 9. Now please return to the “Getting Started” guide Step 1.

MAC OS

First of all we need to change the IP on your MAC to a fixed IP so it is able to communicate with the NAS server.

This is done the following way.

Step 1. Go to System preferences.

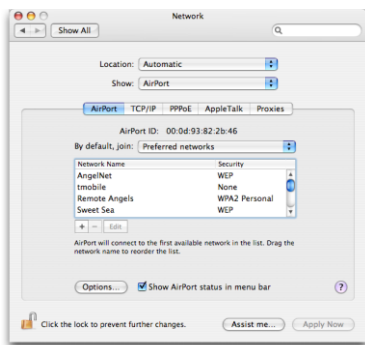


NAS server - Network Guide

Step 2. Click System Preferences.



Step 4. Click Network / Advanced.



Step 5. Click TCP/IP



Please write down the IP address, Subnet Mask, router and DNS servers, this is needed later in the installation process. Note you must press “Apply Now”

Next please configure as below.

NAS server - Network Guide

Configure IPv4: Select: Manually

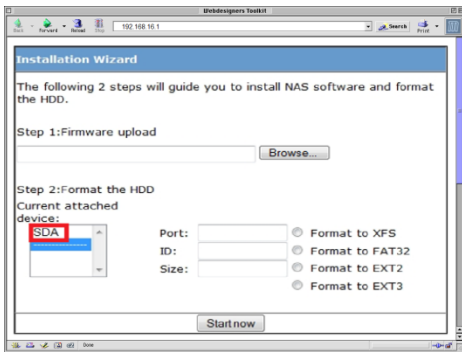
IP address: Type 192.168.16.3

Subnet mask: Type 255.255.255.0

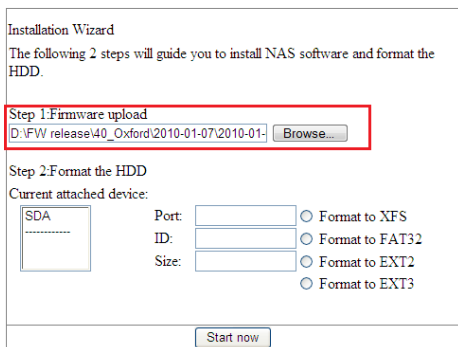
Leave Router and DNS Servers blank.

When done select Apply now.

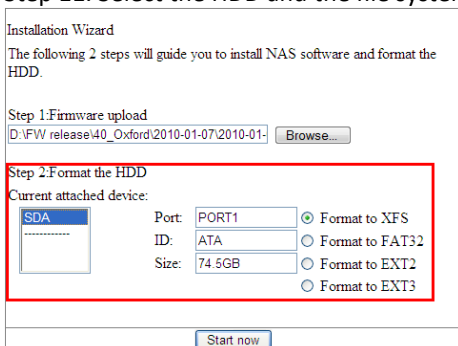
Step 6. Open a browser and type in 192.168.16.1



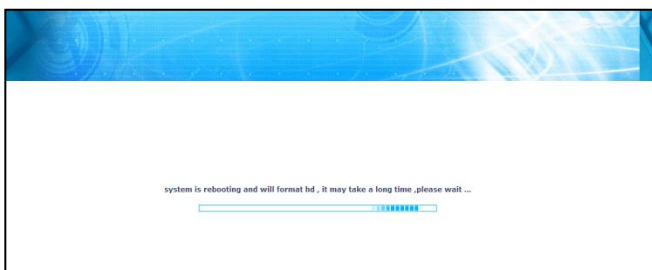
Step 10. To upgrade the NAS server, click the "Browse" button and select the file "1.0.1.33.bin".



Step 11. Select the HDD and the file system which is going to be formatted.



Step 12. Click "Start now" to install and format the HDD, please note that it may be necessary to confirm the format and installation by clicking OK in a popup window.

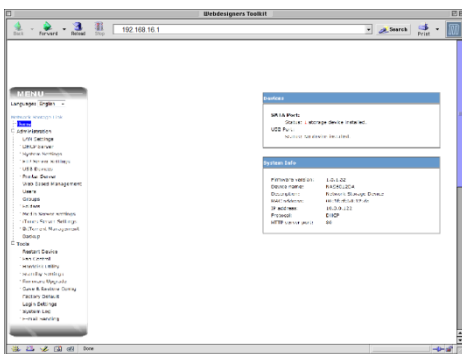


NAS server - Network Guide

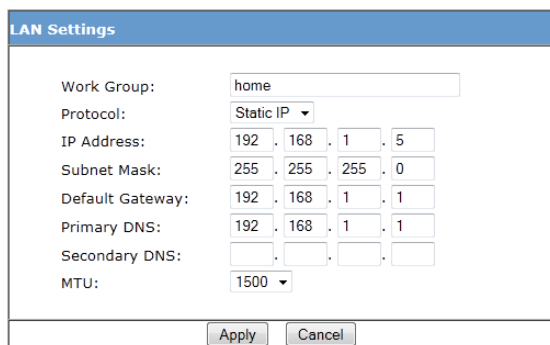
Step 13. When the hard drive has been formatted the NAS server is ready for use but we need to give the NAS server an IP address that is in the range of the network you use normally. This is where we need the IP that we wrote down in the beginning of the configuration. Let us assume that the address was 192.168.1.5 with a subnet mask 255.255.255.0 this is the address of your computer so we want to give the NAS server a different one.

Start by disconnecting the network cable from the NAS server and turning it off and back on using the switch at the back of the NAS server. Please note that the network cable must be disconnected when turning on the NAS server. After 2 minutes, please connect the network cable to the NAS server again.

Step 14. Open a browser and type in 192.168.16.1 in the address bar. Now the login screen for the NAS server will be shown. Username and password are as default; admin and admin



Step 15. Click on LAN Settings.



In Protocol, select: Static IP

NAS server - Network Guide

In IP Address: Type in 192.168.1.5 (please note that if your computers IP does not start with 192.168.1 but something else, please type in the one from the computer instead but add 1 to the final segment so if the computers IP is 192.168.1.2 then the NAS server should have an IP of 192.168.1.3)

In Subnet Mask: Type in 255.255.255.0 (please note that if your computers Subnet mask is not 255.255.255.0 type in the one from the computer instead).

In Default Gateway (Router): Type in 192.168.1.1 (please note that if your computers Default gateway (router) is not 192.168.1.1 type in the one from the computer instead)

In Primary DNS: Type in 192.168.1.1 (please note that if your computers Primary DNS is not 192.168.1.1 type in the one from the computer instead)

In Secondary DNS: Type in 192.168.1.1 (please note that if your computers Secondary DNS is not 192.168.1.1 type in the one from the computer instead, sometimes nothing is set as secondary DNS, in this case leave it blank)

Next click Apply.

Step 16. Setting the MAC network back to standard.

Please repeat steps 1-5 but in step 5 select Using DHCP and click Apply now. You may have to reselect your wireless network and enter the passkey again.



Now the NAS server is ready for use. To access it for configuration purposes, please open up your browser and type in the IP we gave the NAS above e.g. 192.168.1.5 and the login page for the router will be shown.

